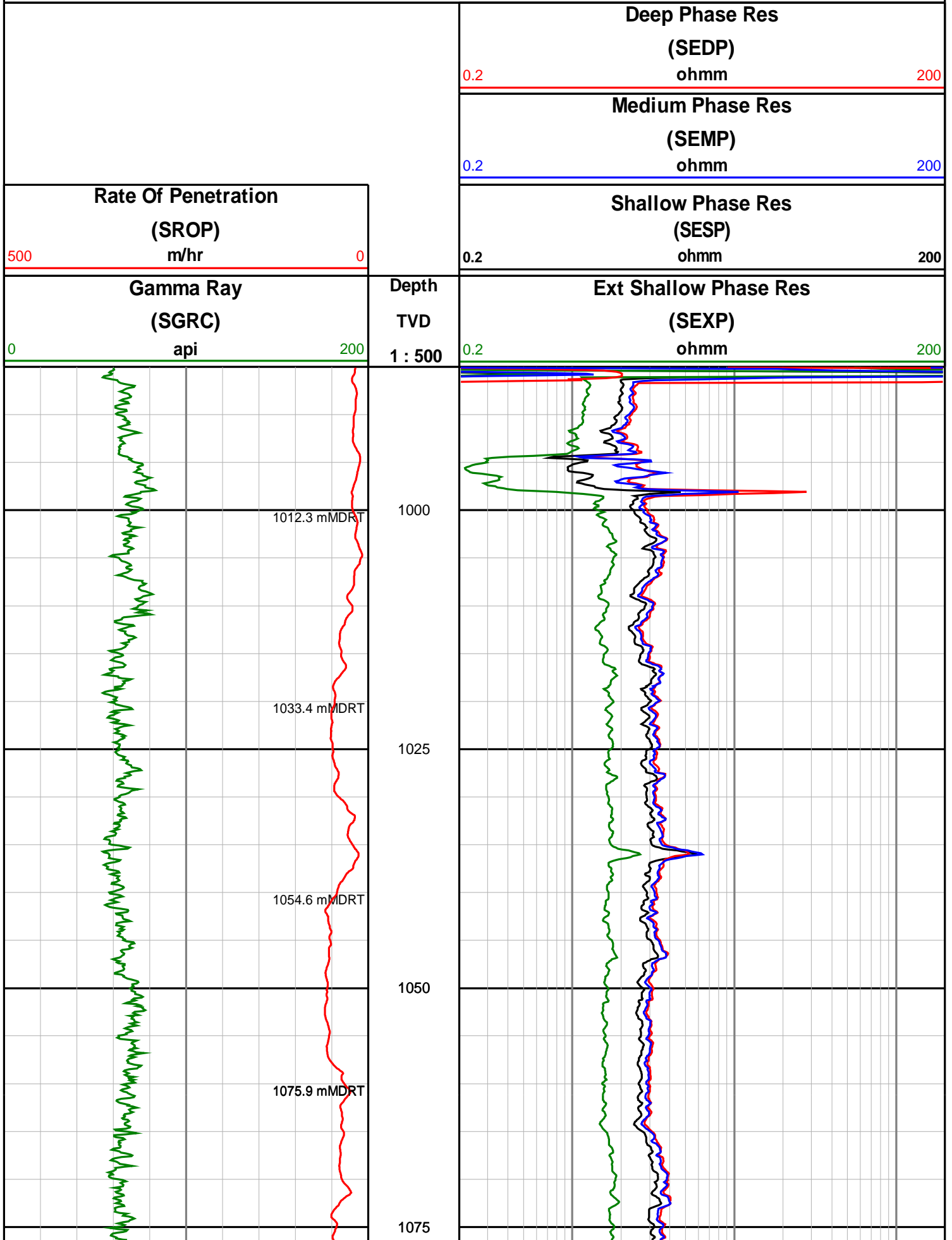
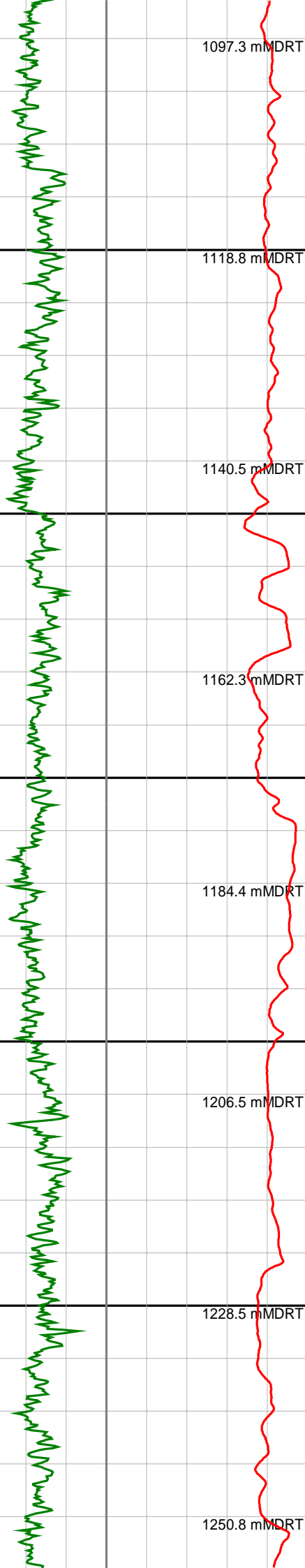


Anzon Australia Ltd

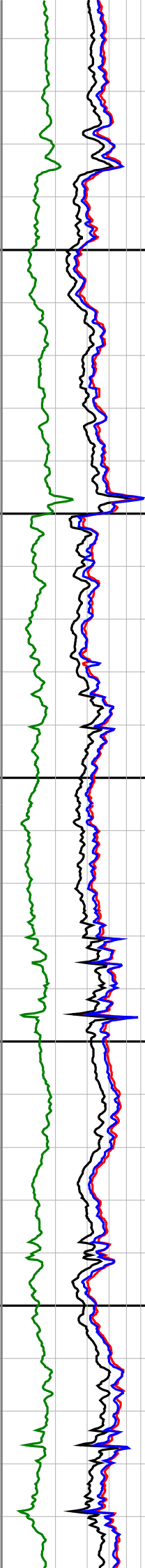
Basker-4

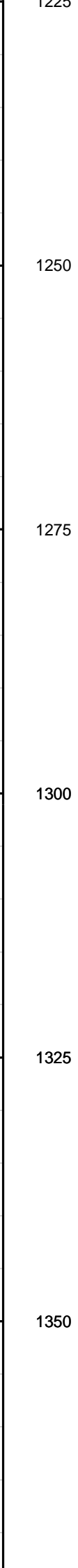
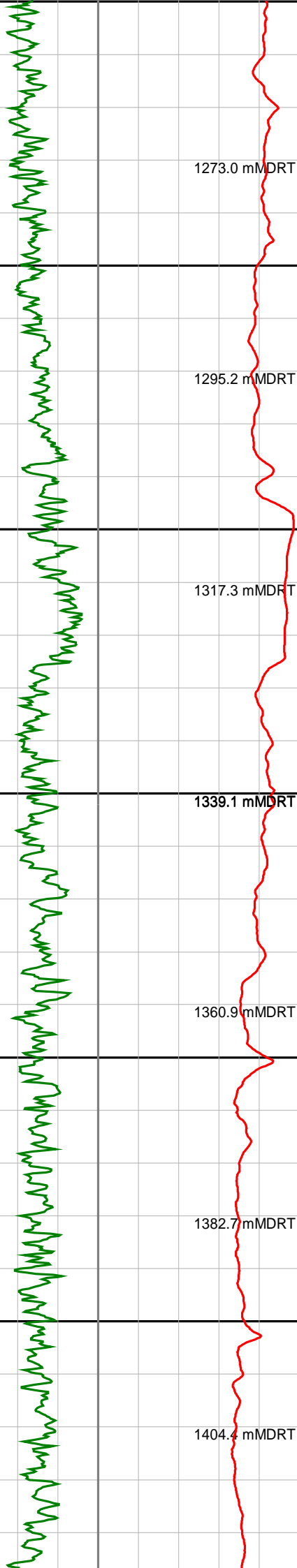
Realtime LWD Log (Permanent Datum - LAT)





1100
1125
1150
1175
1200
1225





1225

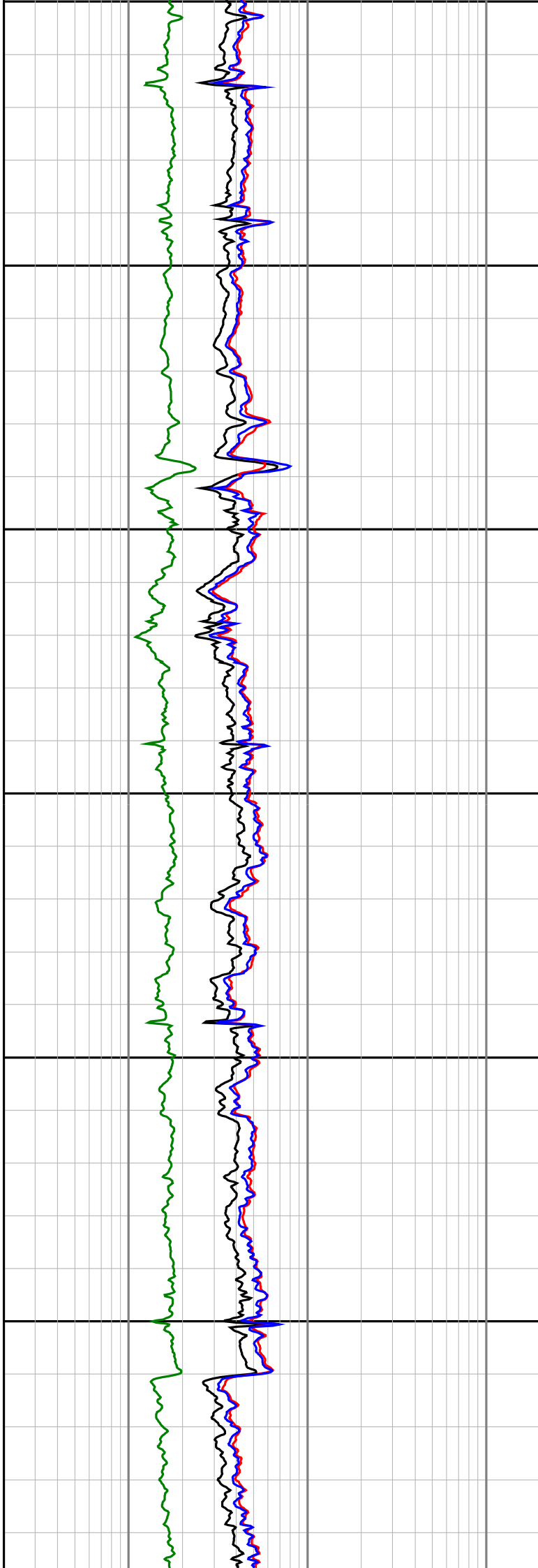
1250

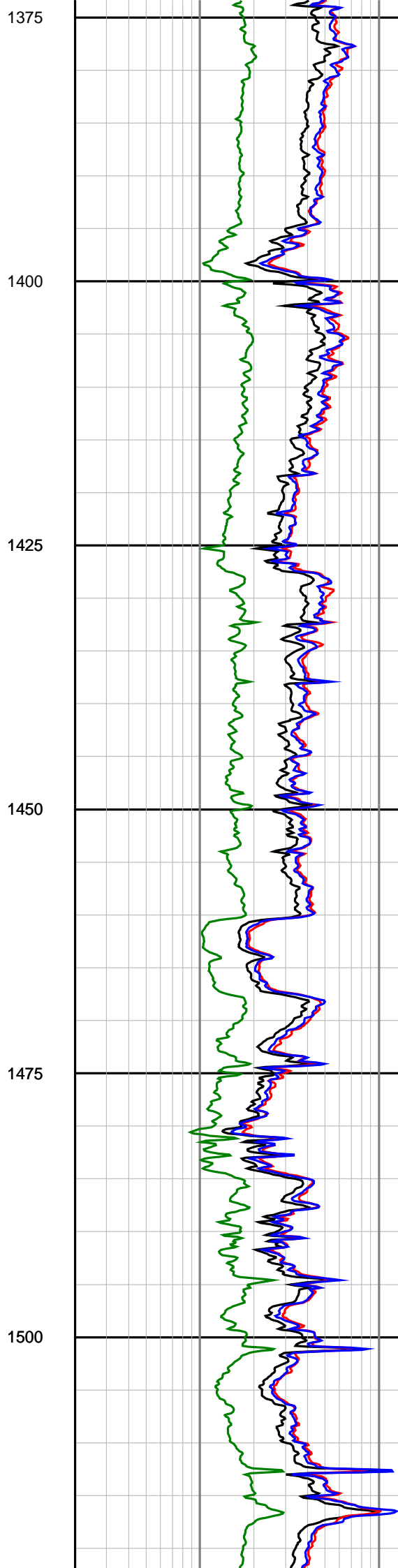
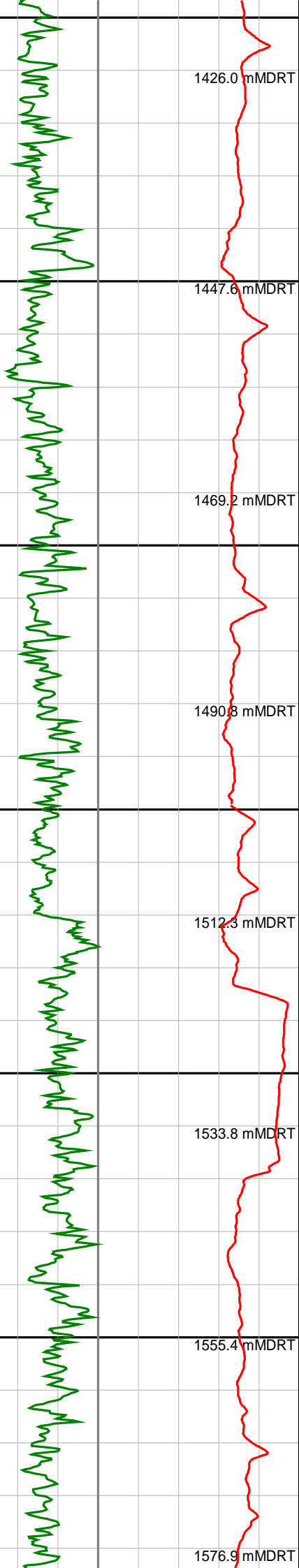
1275

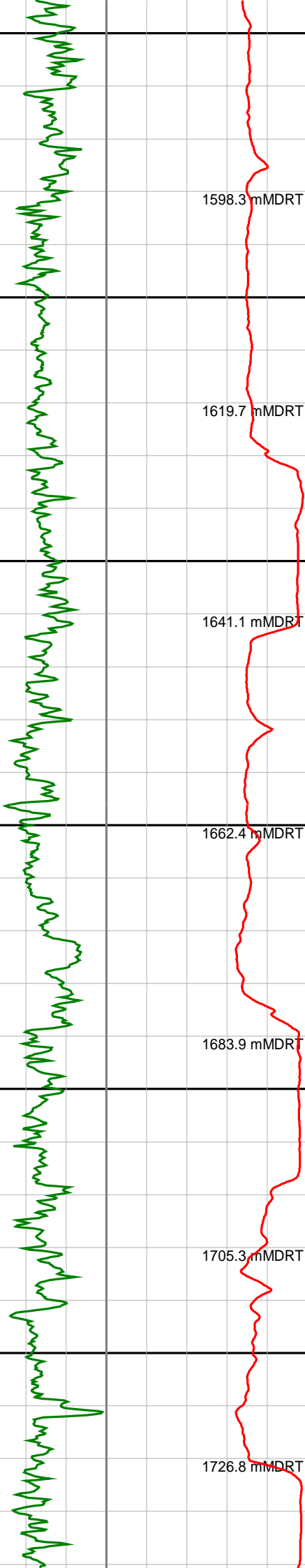
1300

1325

1350







1598.3 mMDRT

1619.7 mMDRT

1641.1 mMDRT

1662.4 mMDRT

1683.9 mMDRT

1705.3 mMDRT

1726.8 mMDRT

1525

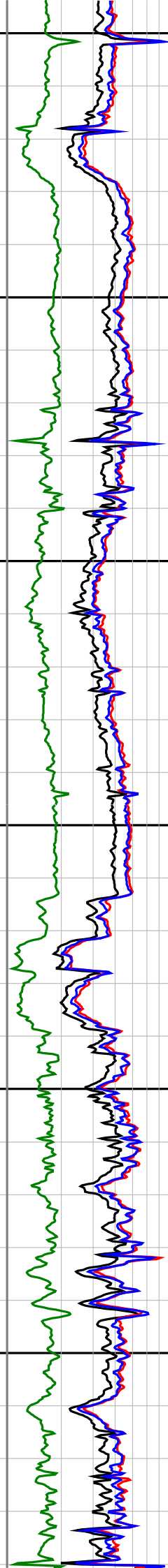
1550

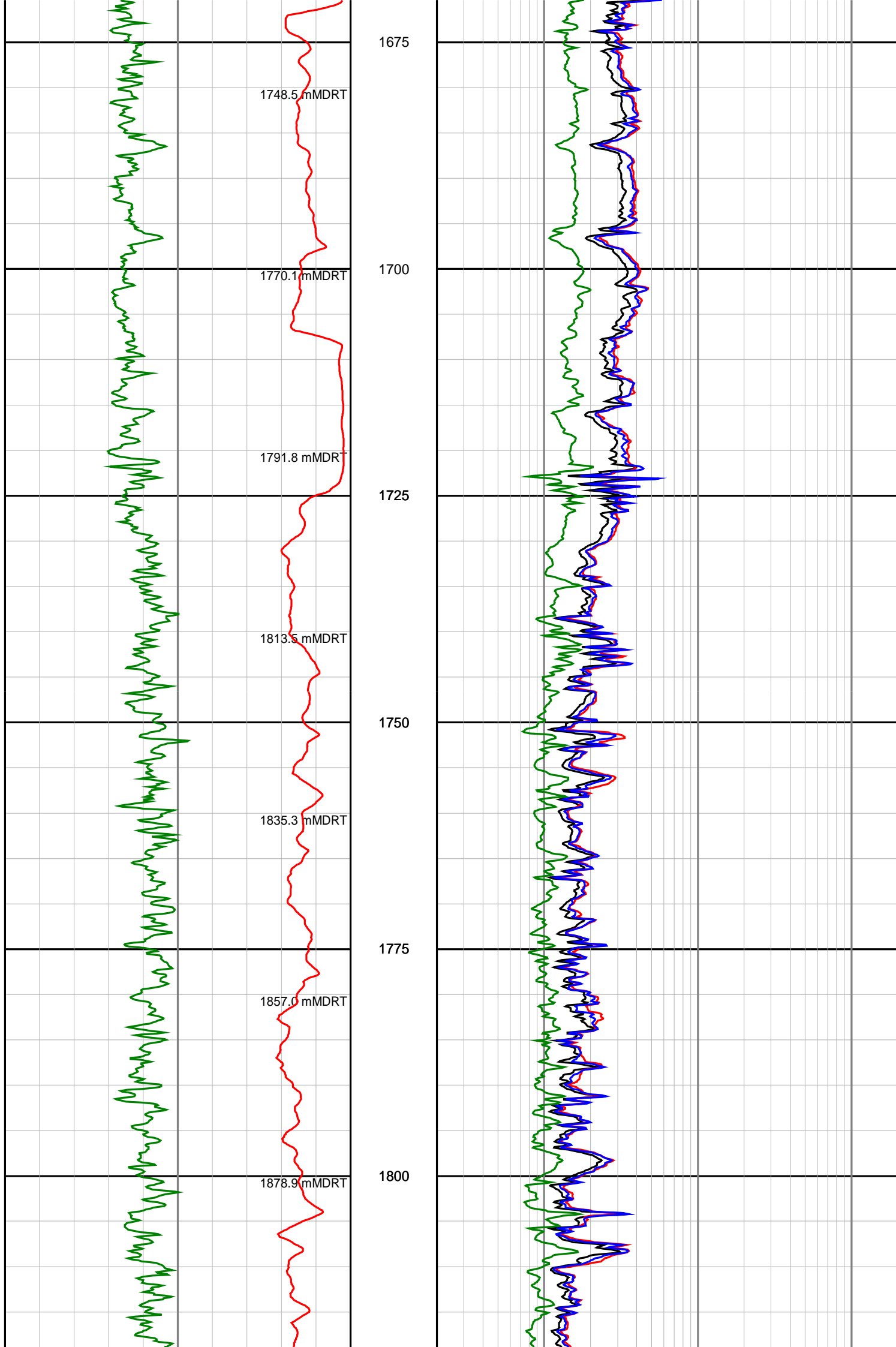
1575

1600

1625

1650





1900.6 mMDRT

1922.3 mMDRT

1944.0 mMDRT

1965.6 mMDRT

1987.2 mMDRT

2008.8 mMDRT

2030.4 mMDRT

2052.1 mMDRT

1825

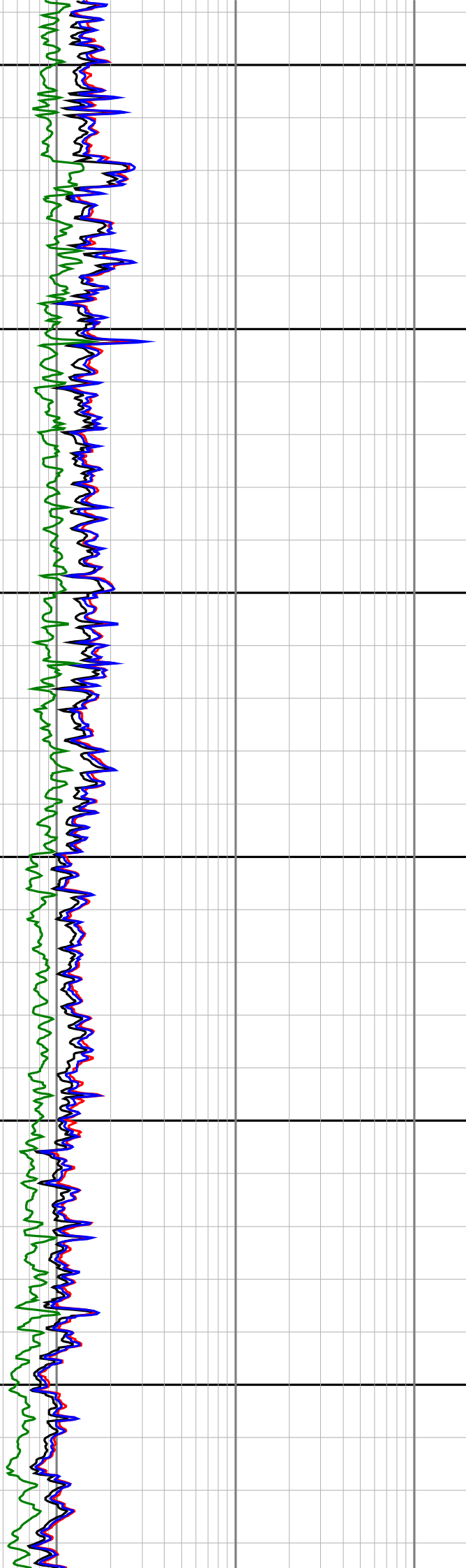
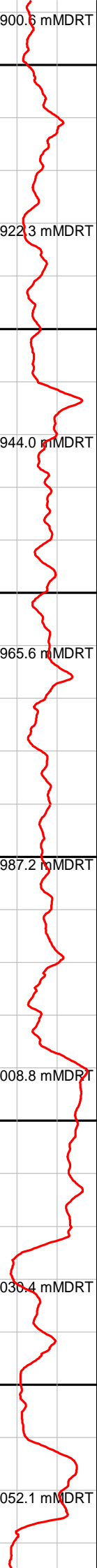
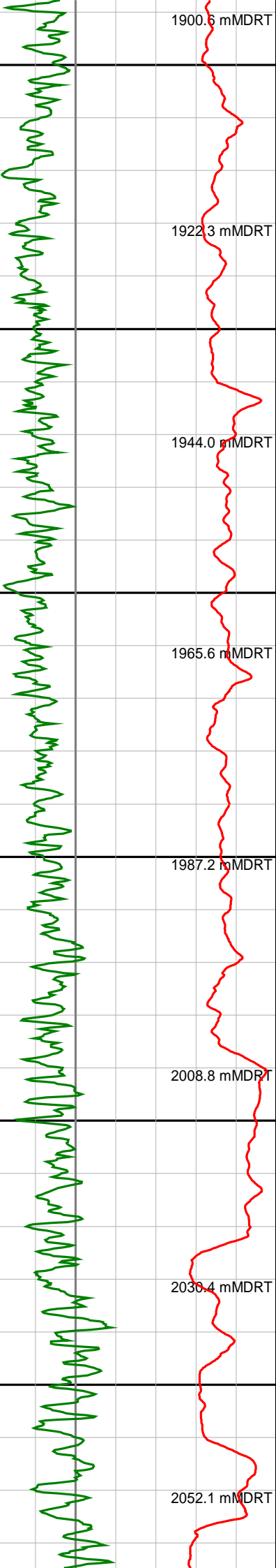
1850

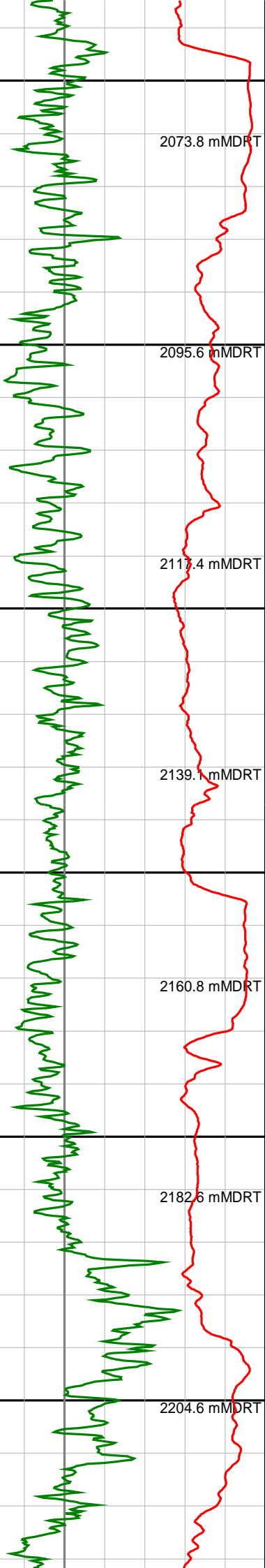
1875

1900

1925

1950





1975

2073.8 mMDRT

2000

2095.6 mMDRT

2025

2117.4 mMDRT

2050

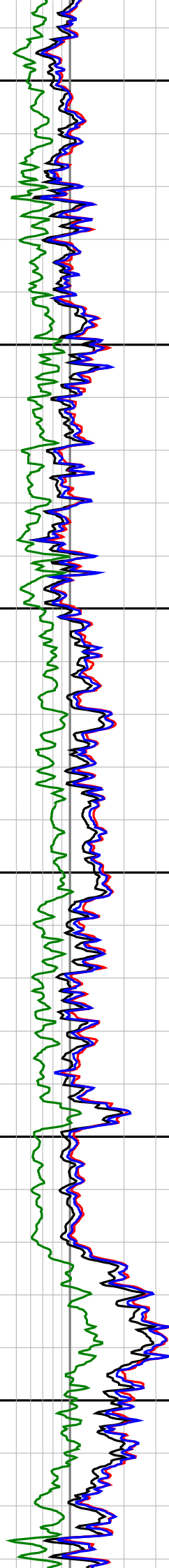
2139.1 mMDRT

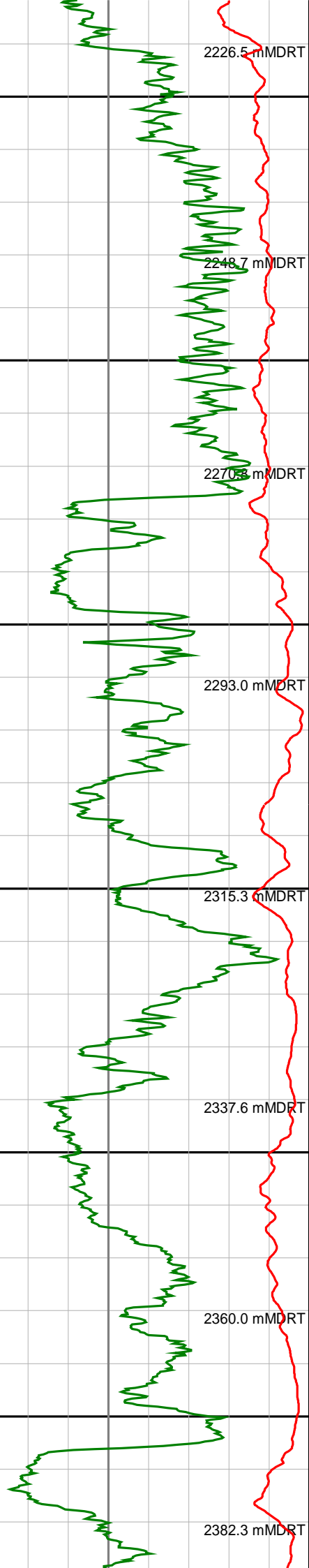
2075

2160.8 mMDRT

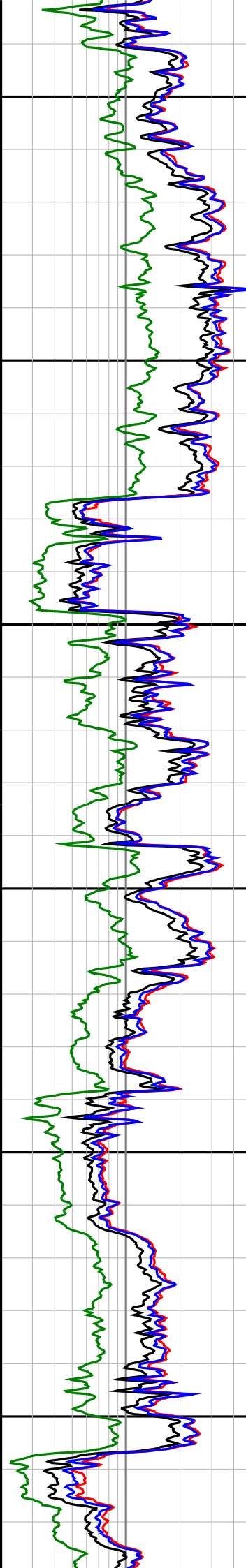
2100

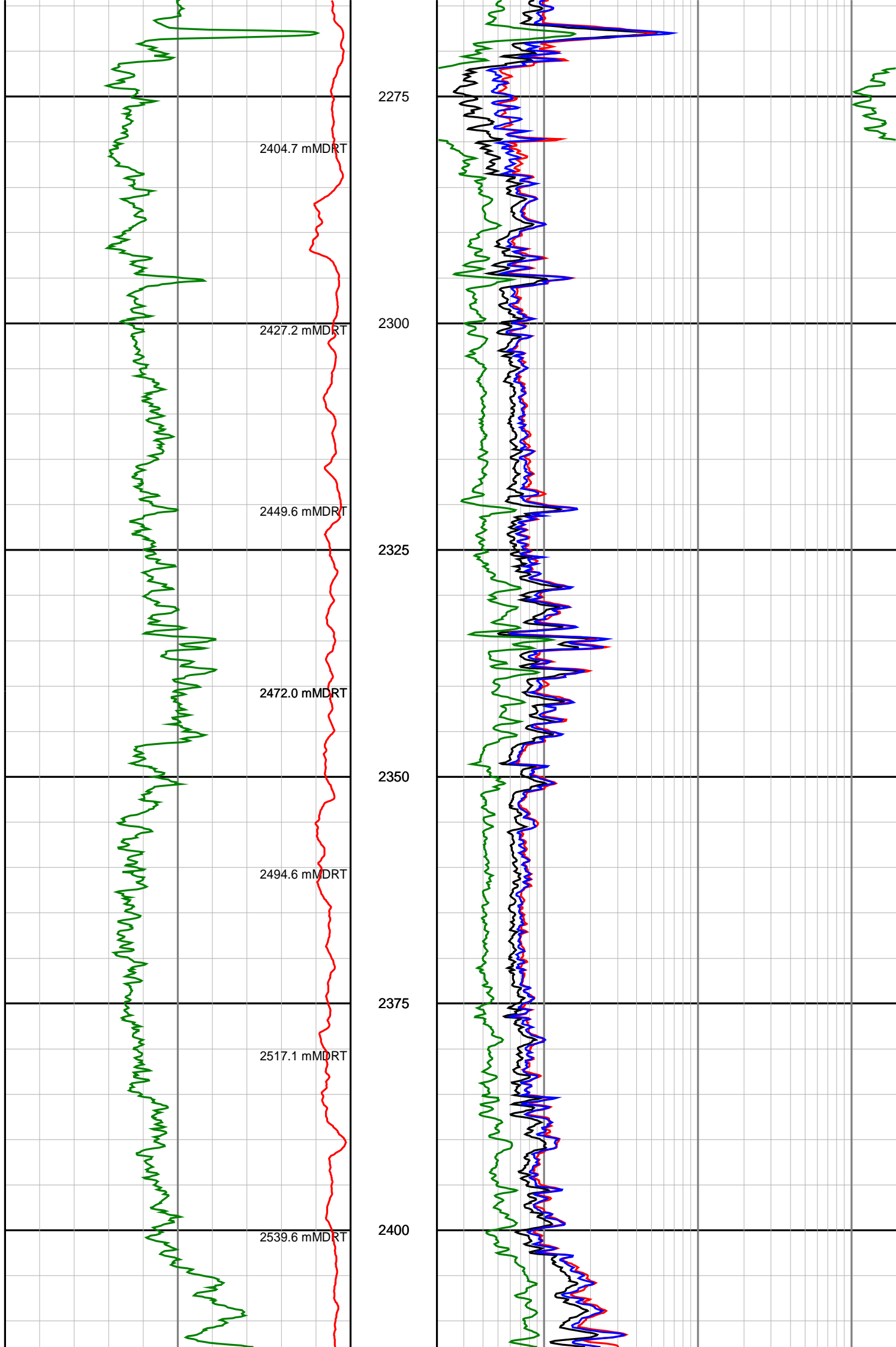
2204.6 mMDRT

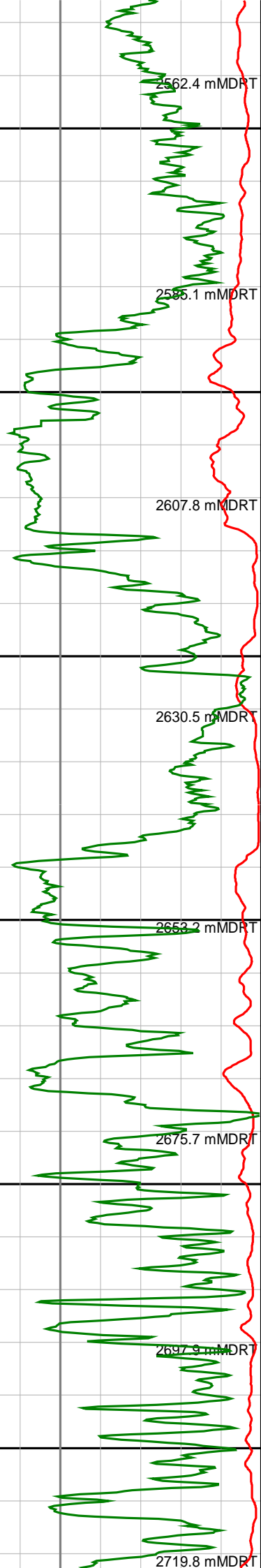




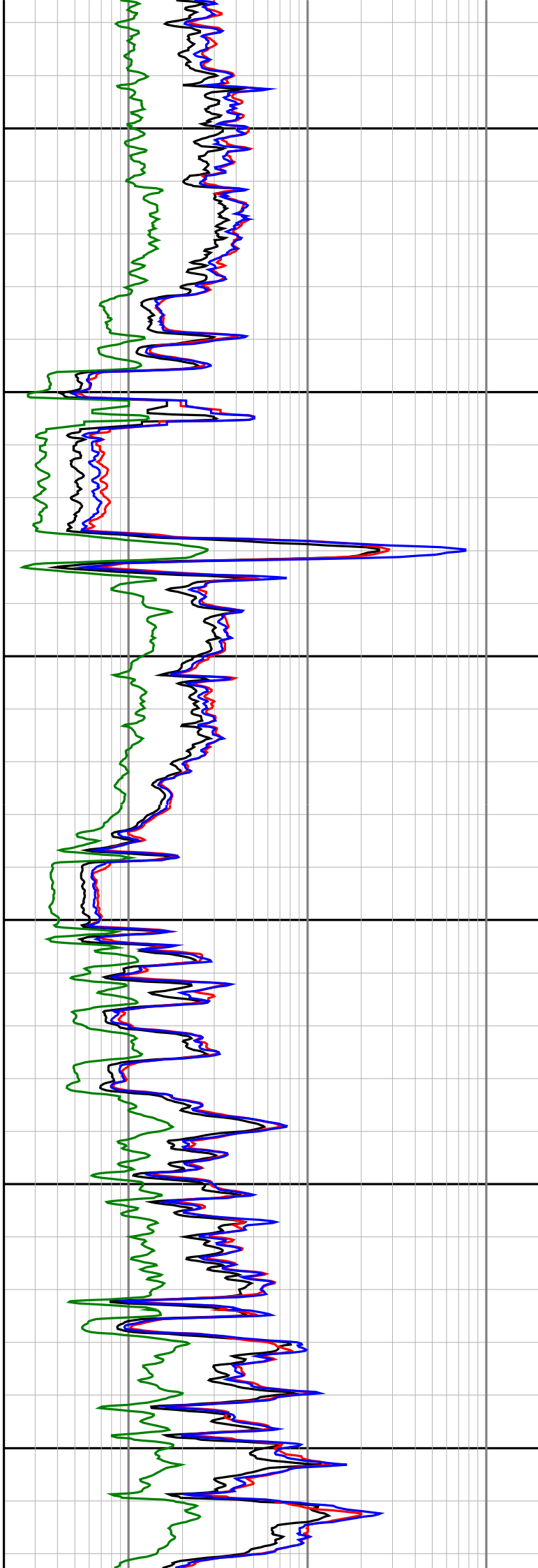
2125
2150
2175
2200
2225
2250

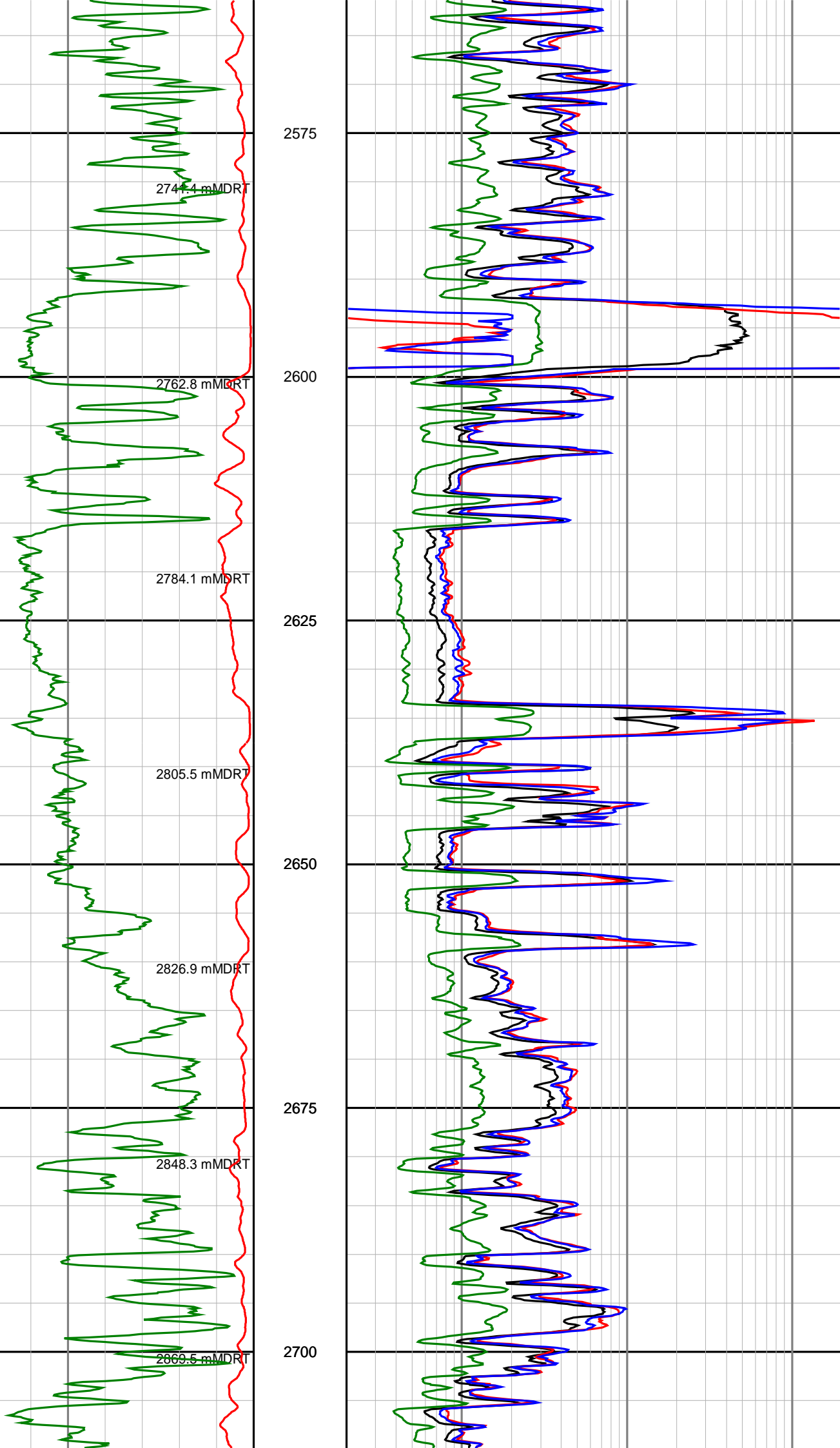


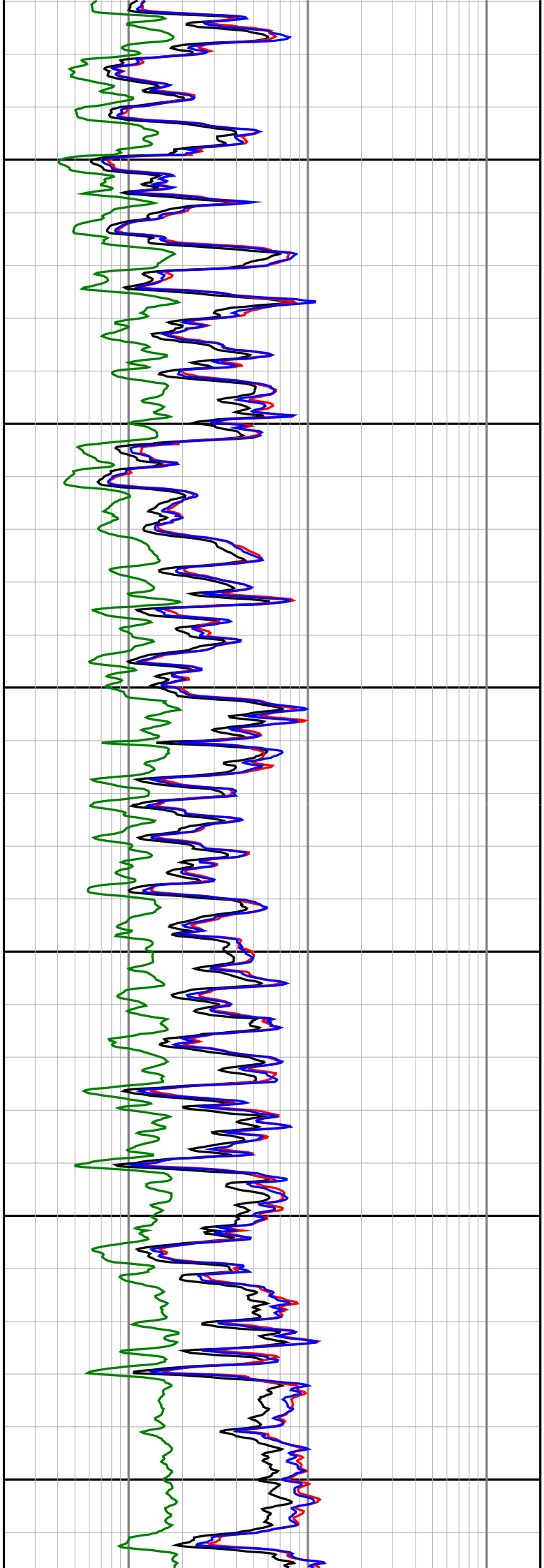
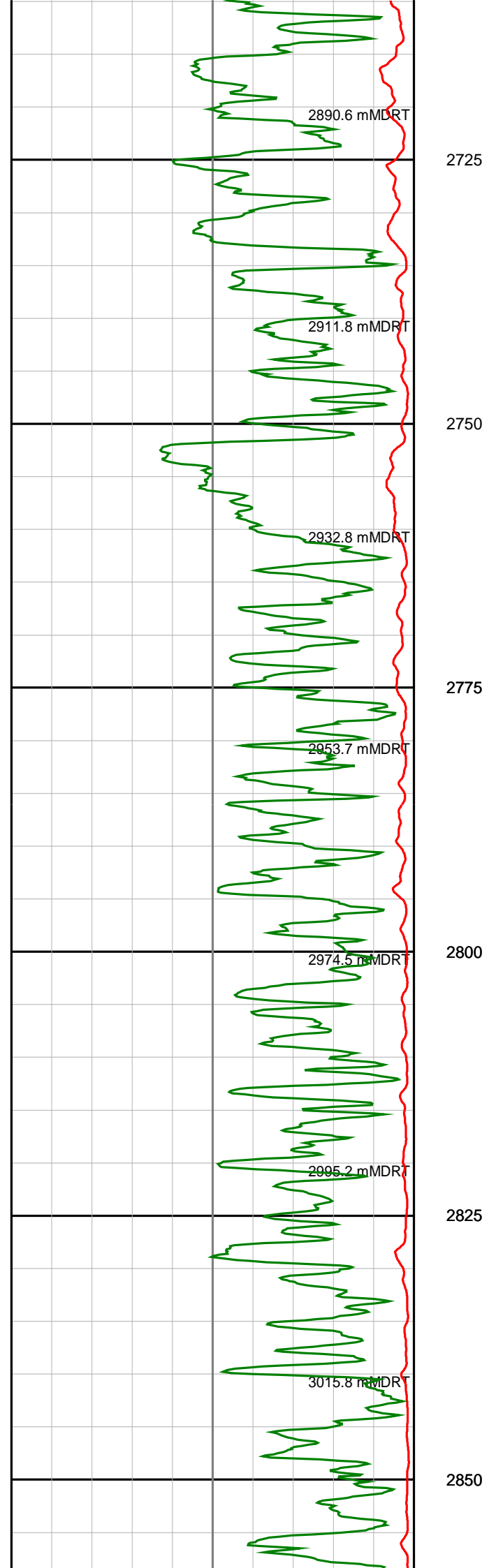


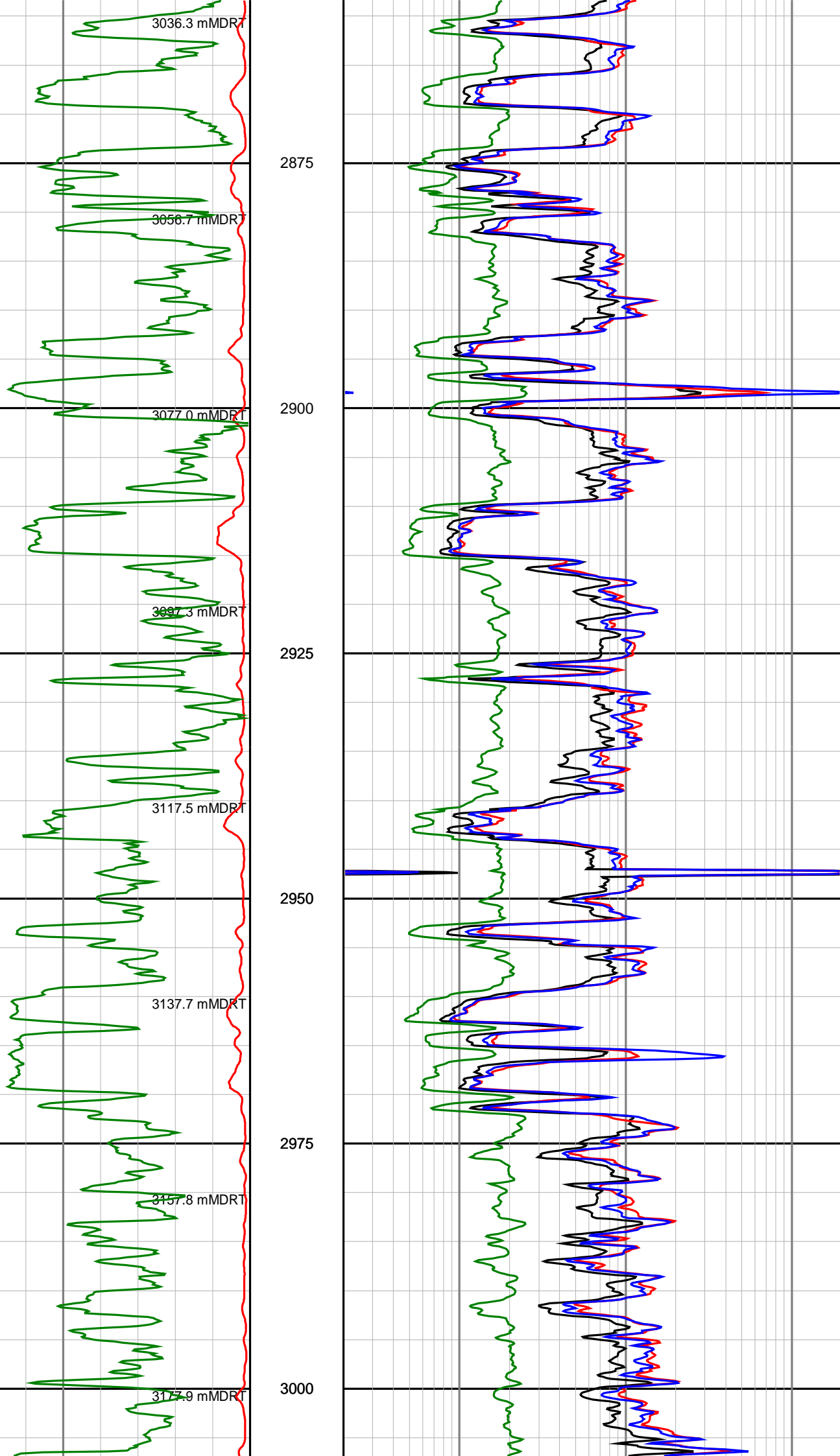


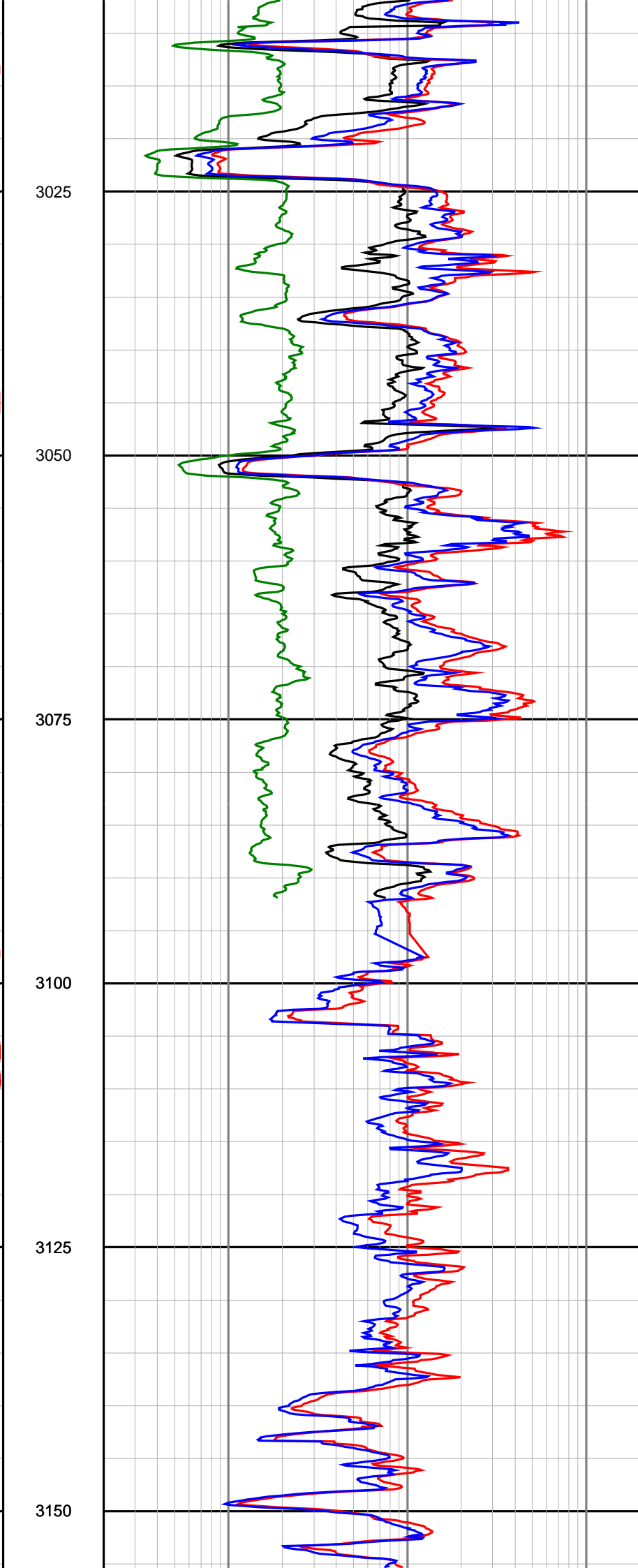
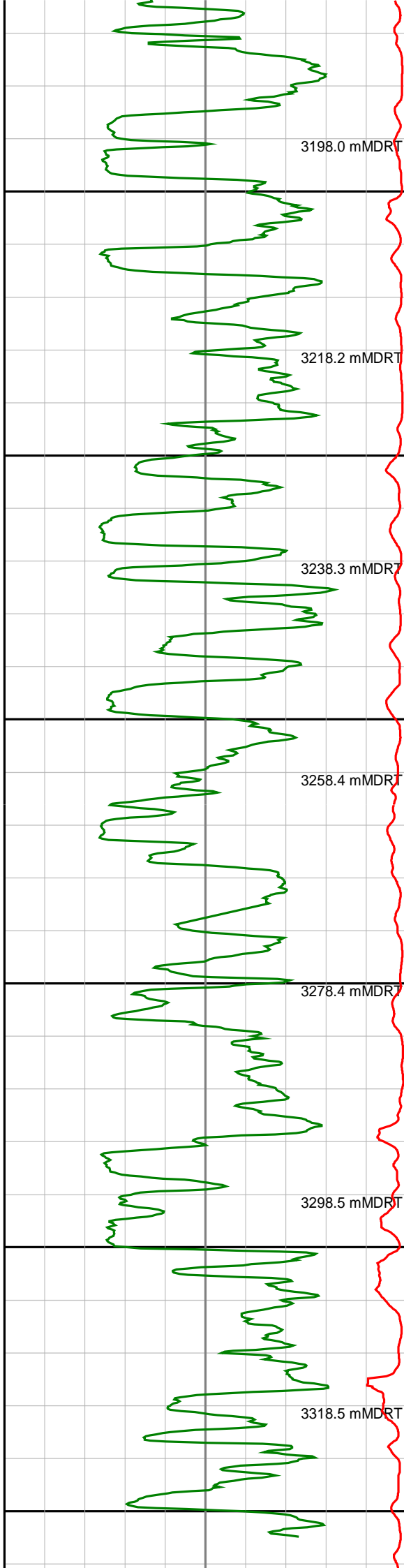
2425
2450
2475
2500
2525
2550











3338.6 mMDRT

2175

<p>Gamma Ray (SGRC) api</p> <p>0 200</p>	<p>Depth TVD 1 : 500</p>	<p>Ext Shallow Phase Res (SEXP) ohmm</p> <p>0.2 200</p>
<p>Rate Of Penetration (SROP) m/hr</p> <p>500 0</p>		<p>Shallow Phase Res (SESP) ohmm</p> <p>0.2 200</p>
		<p>Medium Phase Res (SEMP) ohmm</p> <p>0.2 200</p>
		<p>Deep Phase Res (SEDP) ohmm</p> <p>0.2 200</p>